

BPI

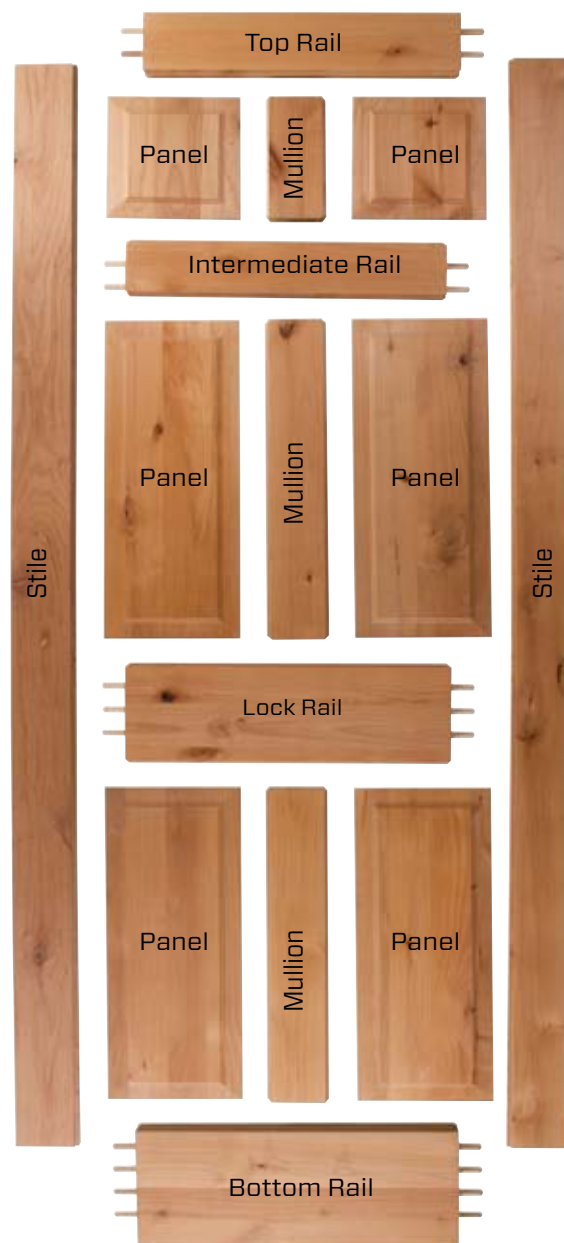
Millwork

Interior Door Systems

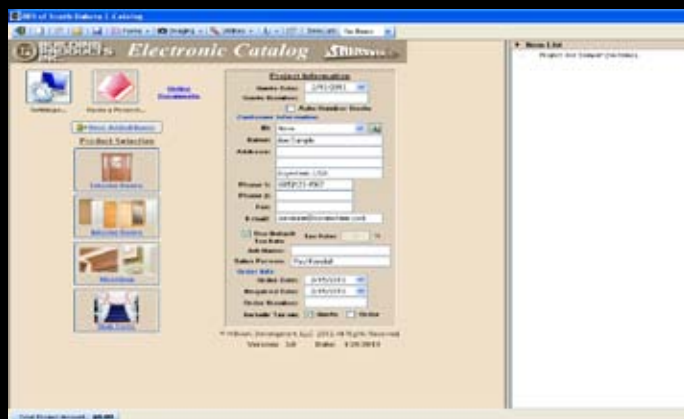


Table of Contents

<i>Oak</i>	<i>4</i>
<i>Maple / Birch</i>	<i>5</i>
<i>Poplar</i>	<i>6</i>
<i>Knotty Pine / Radiata Pine</i>	<i>6</i>
<i>Knotty Alder</i>	<i>7</i>
<i>Cherry</i>	<i>8</i>
<i>True Divided Lite Doors</i>	<i>9</i>
<i>Decorative French Doors</i>	<i>10</i>
<i>Molded</i>	<i>12</i>
<i>Hardware</i>	<i>13</i>
<i>Hinges</i>	<i>14</i>
<i>Door Handing</i>	<i>15</i>



BPI Electronic Catalog



- Easy to use
- Instant Millwork pictures and prices
- Easy estimating and ordering
- Can email projects and pictures

**See your BPI Millwork salesmen to get your copy today

BPI

Millwork

We aim to please our clients by stocking a wide variety of products. With the endless possibilities of interior doors and accessories, we offer custom ordering. This gives our clients endless variety of style options to satisfy every design and need.



Think outside the door...
pocket, bifold & louver



Oak



Flush
Solid Core 1 3/4 & 1 3/8
Hollow Core 1 3/8



2 Panel Shaker FP



2 Panel RP



2 Panel Arch Top RP



3 Panel Shaker FP



4 Panel RP



6 Panel RP



Oak, both hard and heavy, grows mainly in the North Central United States. With a coarse texture and a straight, prominent grain, oak accepts a broad range of stains and finishes.



Maple / Birch



2 Panel Shaker FP



2 Panel Arch Top RP



3 Panel Shaker FP



4 Panel RP



6 Panel RP



Natural Flush Birch
Hollow Core 1 3/8
Solid Core 1 3/4



Maple grows in the Eastern United States and offers a very fine grain and a whitish color tinged with reddish brown.

Birch is typically rather short-lived species widespread in the Northern Hemisphere, particularly in northern temperate. Birch wood is fine-grained and pale in colour, often with an attractive satin-like sheen.



Poplar



2 Panel FP



2 Panel RP



2 Panel Arch Top RP



3 Panel Shaker FP



4 Panel RP



6 Panel RP

Poplar grows in the Eastern United States. Colors of Poplar vary from brown to pale yellow to olive green. Poplar is a medium density hardwood, generally straight-grained with a fine, even texture.

Knotty Radiata Pine / Radiata Clear Pine



2 Panel V-Groove Arch Top FP



2 Panel V-Groove FP



6 Panel RP Double Hip



Full Louver



6 Panel RP

Knotty Pine is abundant in America. The wood tends to be a honey-toned or straw-like color while the knots are generally reddish-brown in color.

Radiata Pine is a plantation-grown wood from Chile, New Zealand and Australia. It has a distinctive grain pattern with a pale cream color. Radiata tends to be harder than other pine species and has fewer knots.

Knotty Alder



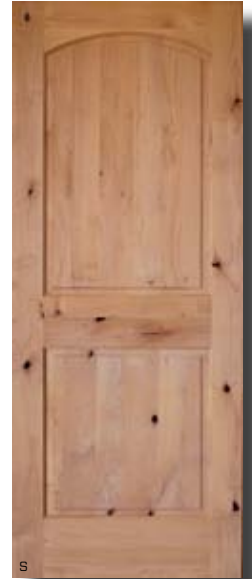
2 Panel V-Groove FP



2 Panel RP



2 Panel V-Groove Arch Top FP



2 Panel Arch Top RP



3 Panel Shaker FP



6 Panel RP

Red Alder grows in the Pacific Northwest and is a medium density hardwood with an even grain appearance. The wood is normally light brown with hues of red and peach. Its softer nature makes it easy to machine and receptive to a variety of stains and finishes.



Cherry



2 Panel Arch Top RP



2 Panel Shaker FP



3 Panel Shaker FP



6 Panel RP



Cherry grows in the Eastern and Midwestern United States and offers a range of colors including white, light red, deep red and a reddish brown. Cherry has a fine, uniform straight grain and a smooth texture. Cherry accepts a variety of stains and finishes.

True Divided Lite



Poplar 15 Light



Cherry 15 Light



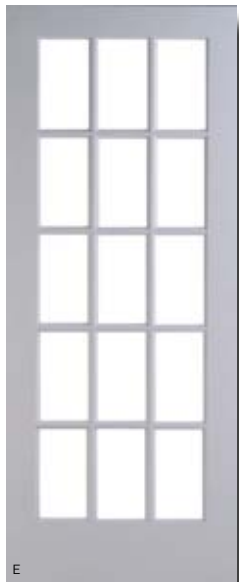
Maple 15 Light



Oak 15 Light



Radiata Pine 15 Light



Primed 15 Light



Knotty Alder



Smaller sized French Doors will come with 10-lite. As seen above.

Decorative French Door Glass



Oak
15 Lite V-Groove
10 Lite V-Groove



Knotty Alder
5 Lite V-Groove
Frosted



Poplar
Pantry



Primed
Rain

Choose a glass that fits your style then a door specie to frame the beauty. Style plus beauty makes your house a home.



Knotty Alder
Clear



Primed
Frosted



Molded Panel



Cambridge - 2 Panel RP
Smooth Hollow Core
Smooth Solid Core



Caiman- 2 Panel
Arch Top RP
Smooth Hollow Core
Smooth Solid Core



Santa Fe - 2 Panel Arch
Top V-Groove RP
Smooth Hollow Core
Smooth Solid Core



Craftsman - 3 Panel FP
Smooth Hollow Core
Smooth Solid Core



Atherton - 4 Panel RP
Solid Core Smooth



Conmore- 5 Panel RP
Smooth Solid Core



Bostonian - 6 Panel RP
Textured Hollow Core



Bistol - 6 Panel RP
Smooth Hollow Core
Smooth Solid Core

Legacy



Country Oak - Flush



Premier Oak - Flush



Snow white 6 panel

Sherwin Williams Coatings - Strong, lasting finish
100% Water Base Coatings - Safe for your family and environment
Experienced staff - Quality, craftsmanship
Computer color match system - Endless variety, accuracy
On site prefinish plant - On time delivery
Controlled environment - Hassle free finish
State-of-the-art equipment - Breakthrough technology

Our Ultra - Cure UV Waterborne technology is an environmentally conscious innovation that provides you with these benefits:

- Abrasion, chemical, impact and scratch resistant
- No reportable HAP's (hazardous air pollutants)
- Low VOC (volatile organic compounds)
- No outgassing
- Formaldehyde and heavy metal free
- Reclaimable



See BPI Prefinish Literature Paint and Stain Collection

Hardware - Knobs, Levers & Deadbolts

Knobs - Ball



Available in:
Antique Brass
Polished Brass
Tuscan Bronze

Satin Stainless

Knobs - Colonial



Available in:
Polished Brass
Antique Nickel
Tuscan Bronze

Satin Stainless

Knobs - Egg



Available in:
Tuscan Bronze

Satin Stainless

Knobs - Heritage



Available in:
Tuscan Bronze

Satin Stainless

Levers - Braxton



Available in:
Antique Brass
Antique Nickel
Tuscan Bronze
Black

Satin Stainless

Levers - Hailey



Available in:
Polished Brass
Tuscan Bronze

Satin Stainless

Levers - Waverlie



Available in:
Antique Nickel
Polished Brass
Tuscan Bronze

Satin Stainless

Levers - Tienna



Available in:
Tuscan Bronze

Satin Stainless

Deadbolts - E-Single Cyl



Available in:
Antique Brass
Antique Nickel
Polished Brass
Tuscan Bronze
Black

Satin Stainless

Finishes



Antique Brass



Polished Brass



Tuscan Bronze



Antique Nickel



Black

Hinges

Available in standard and ball bearing hinges



Antique
Brass



Antique
Bronze



Antique
Nickel



Bright
Brass



Satin
Chrome



Satin
Nickel



Yellow
Zinc

BPI / *Millwork*

Service

Reliable



Quality

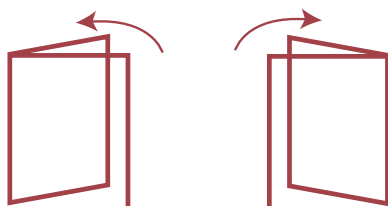


Commitment



Interior Doors | Exterior Doors | Trim | Moulding
Columns | Prefinish | Cladding

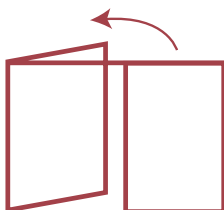
Single Door Handing



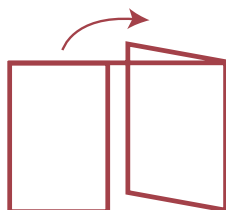
#1 Left Hand

#2 Right Hand

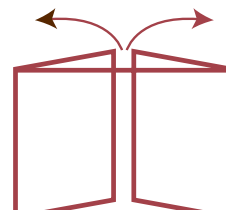
Double Door Handing



#13 Right Door Stationary
w/ Astragal
Left Door Active



#14 Left Door Stationary
w/ Astragal
Right Door Active



Both Doors Active
Roller Catch

Prehung Single Doors

	Width	Height
1-6 x 6-8	20"	82 1/2"
2-0 x 6-8	26"	82 1/2"
2-4 x 6-8	30"	82 1/2"
2-6 x 6-8	32"	82 1/2"
2-8 x 6-8	34"	82 1/2"
3-0 x 6-8	38"	82 1/2"

Prehung Double Doors

	Width w/o astragal	Width w/ astragal	Height
3-0 x 6-8	38"	38 1/2"	82 1/2"
4-0 x 6-8	50"	50 1/2"	82 1/2"
4-8 x 6-8	58"	58 1/2"	82 1/2"
5-0 x 6-8	62"	62 1/2"	82 1/2"
5-4 x 6-8	66"	66 1/2"	82 1/2"
6-0 x 6-8	74"	74 1/2"	82 1/2"

Bifolds w/ Jamb

	Width	Height
2-0 x 6-7	26"	82 1/2"
2-6 x 6-7	32"	82 1/2"
3-0 x 6-7	38"	82 1/2"
4-0 x 6-7	50"	82 1/2"
5-0 x 6-7	62"	82 1/2"
6-0 x 6-7	74"	82 1/2"

Interior door systems supported by:



METRIE



woodgrain doors

Dealer:



BPI

Millwork

07/14

1820 E. 54 Street N.
Sioux Falls, SD 57104
605.336.1910 1.800.843.0076
Fax 605.335.1324 1.800.524.0284
www.buildingproductsinc.com